



THE EIGHTEENTH ANNUAL RED LOBDELL MEMORIAL REGATTA

Saturday, July 27, 2019

SAILING INSTRUCTIONS

1. **Organizing Authority.** This regatta is organized by the Stonington Harbor Yacht Club. This regatta will be governed by *The Racing Rules of Sailing 2017-2020* and the prescriptions of The United States Sailing Association (RRS) as modified by these Sailing Instructions (SI's).
2. **Eligibility.** This regatta is open to all PHRF rated boats 20 feet LOA or longer; all NEMA rated boats; and all one design classes with three or more entries that appear timely at the starting line.
3. **Entry.**
 - 3.1. Entries, including payment and acceptance of the Liability Waiver by the skipper and each crew member, may be done online via www.YachtScoring.com, no later than July 25, 2019. The waiver form is also available at www.shyc.us/racing, and needs to be signed only once per year. Competitors less than 18 years old must submit the form signed by a parent. Hard copies may be submitted to the Red Lobdell Regatta Chair, SHYC, 32 Water Street, 9 Stonington Commons, Stonington CT 06378.
 - 3.2. A valid PHRF-ECSA or NEMA (multihull) rating certificate is required for each Race Circle 1 boat.
 - 3.3. The entry fee is \$35 for all boats over 20 feet LOA, and \$15 for all boats 20 feet LOA or less.
4. **General Provisions.**
 - 4.1. Rules 44.1 and 44.2 are changed to a penalty of one turn. A boat that has taken a penalty turn hereunder will notify the RC on VHF 79 or by hailing immediately after the race, describing the incident.
 - 4.2. In the event of a conflict between the NOR and these SI's, the SI's will govern.
 - 4.3. Sail or hull numbers will be displayed on all boats.
 - 4.4. All boats in Race Circles 1 and 2 will carry VHF radios and will monitor VHF 79.
 - 4.5. Any boat abandoning a race should immediately notify the RC on VHF 79 or by hailing the signal boat or another RC boat.
 - 4.6. Engines must be turned off at least 4 minutes before the start of a boat's class.
 - 4.7. If it becomes necessary to change these SI's, such changes will be announced to all affected classes over VHF 79 or by hailing boats prior to an affected class's start.
 - 4.8. Each boat will check in with the RC for its respective circle, by sailing under the committee boat's stern and announcing her intention to race. Please do not check in by radio.
 - 4.8.1. Circle 1 boats will check in between 1000 and 1025.
 - 4.8.2. Circle 2 boats will check in before 1255.
 - 4.8.3. Circle 3 boats will check in before 1320.
 - 4.9. Any boat not finishing its race(s) by 1700 will be scored DNF. This changes RRS Rule 35.

- 4.10. Individual recalls for being OCS will be indicated by display of Flag "X" and one horn regardless of the number of boats being recalled. The RC will attempt to hail boats OCS on VHF 79. Boats so recalled and failing to return and restart will be assessed a 20 minute penalty for Race Circle 1, and will drop 1 place in scoring for Race Circles 2 and 3. RRS 29.1 is modified accordingly. General Recalls will be signaled in accordance with RRS Rule 29.2.
- 4.11. The RC may choose to start two or more classes together rather than individually. The RC may choose to start classes not in sequential numerical or letter order. During the Starting sequences, be aware of the class flag(s) displayed for each sequence and listen for announcements. The Class Flag for each class will be the pennant for the class number or letter. The Scratch Sheet will assign each boat to the appropriate class. See section 5 below.
5. **Race Circle and Class Assignments.** The Race Circles will be divided into classes as follows. There is no limit to the number of classes that can be so entered but the Race Committee (RC) will review and qualify each class. The RC will make the final class determinations. Assigned classes will be shown on the Scratch Sheet available after 1200 on July 26 and from the Committee boat until 1010 on race day.
- 5.1. **Race Circle 1:**
- Class 1:** PHRF rated boats 20 feet LOA or longer, spinnakers permitted.
 - Class 2:** PHRF rated boats 20 feet LOA or longer, cruising canvas only, no spinnakers of any type
 - Class 3:** NEMA rated multihull boats.
 - Class 4:** J-24's, spinnakers permitted – but if fewer than three J-24's enter, each J-24 will choose to sail as part of Class 1 or Class 2, and shall notify the RC of its choice when checking in at the starting area. Check the scratch sheet for entries.
- Class 1 and 2 races are ECSA points races.
- 5.2. **Race Circle 2:**
- Class 5:** Watch Hill 15s.
 - Class 6:** Shields.
 - Class 7:** one design boats over 19 feet LOA with three or more entrants of the same class having filed entry documents and checked in with the RC at the starting area. Each compliant class will be assigned a separate class letter under Class 7: i.e., 7A, 7B, etc.
- 5.3. **Race Circle 3:**
- Class 8A:** Lasers
 - Class 8B:** Sunfish
 - Class 9:** Ideal 18s
 - Class 0: any other** one design boats 19 feet LOA and under with three or more entrants of the same class having filed entry documents and checked in with the RC at the starting line. Each compliant class will be assigned a separate class letter under Class 0: i.e., 0A, 0B, etc.
6. **Race Circle 1.**
- 6.1. The Starting/Finish Line for the **Race Circle 1** will be south of the outer breakwater. It will be between an orange flag on the RC Committee Boat and an inflatable buoy, in all cases racers leaving the buoy to port. The RC boat will be anchored south of the outer breakwater. If the race is shortened, it will be done in accordance with RRS Rule 32. Be aware that the RC boat that starts any race may not be the same boat that is at the finish line. Any official RC boat will display a blue or yellow RC flag. The Finish Line will be between a blue or orange flag on the RC boat and an inflatable buoy, racers always leaving the buoy to port.

6.2. Race Circle 1 will be started using the 5-minute sequence of RRS Rule 26, with the first warning expected to be at 1030. The warning signal for each succeeding class shall be made after the starting signal of the preceding class; there will be no rolling starts.

Time Until Start	Signal	Flag	Sound
5 minutes	Warning	Class Flag(s) Up	1 sound
4 minutes	Preparatory	"P" Flag Up	1 sound
1 minute	1 minute	"P" Flag down	1 long sound
0 minutes	Start	Class Flag Down	1 sound

6.3. Race Circle 1 will use Government Marks for course definition. It is expected that there will be one race, with the course expected to be 20 to 25 nm in length. The course will be identified before the start on the Committee Boat course board in order of rounding. Letters P and S indicate the preceding mark(s) are to be left to Port or Starboard. F indicates the finish line. Examples: "R N P F" indicates marks R and N, each left to port, and then to finish. "R F P Y S F" indicates marks R and F, each left to port, mark Y left to starboard, and then to finish.

6.4. Letter codes for each possible Government Mark follow, and a chart showing locations appears at the end of these SI's.

Assigned letter	Nav. chart designation	Mark location
I/M		Inflatable mark
A	G"9"	Flashing Green Gong at Cerberus Shoal
N	RG"SP"	Red and Green Nun 0.15 nm south of Stonington Point
G	G"3"	Green Gong 0.35 nm SW of the Horn on Middle Ground Breakwater, the outer Stonington Breakwater
J	RW"L"	Mo(A) whistle Lord's Passage. (Boats must pass between Can "7" and N "2L" in Lord's Passage.)
B	R"6"	Flashing red bell at Napatree Point Ledge
Y	N"16"	Red Nun at southeast end of Eel Grass Ground
R	R"20"	Red Bell south of Ram Island Reef
E	"Fl 4 Sec"	Seaflower Reef, 1 nm south of Mumford Cove
M	C"1"	Green can at mouth of Mystic River
L	RB "DIR"	Red and black can at Intrepid Rock
C	RW "SE"	Red & white Whistle 0.1 nm west of Silver Eel Cove, Fishers Is.
F	R"4"	Red flasher and bell 1 nm south of Bartlett Reef
K	R"2"	Red Nun SW Race Pt Fishers Island. Note: Boats may not pass between red bell # 2 and North Hill on Fishers Island.

7. Race Circle 2.

7.1. The Starting/Finish Line for Race Circle 2 will be south of the outer breakwater. It will be between an orange flag on the RC Committee Boat and an inflatable buoy, in all cases racers leaving the buoy to port. The RC boat will be anchored south of the outer breakwater. If any race is shortened, it will be done in accordance with RRS Rule 32. Be aware that the RC boat that starts any race may not be the same boat that is at the finish line. Any official RC boat will display a blue or yellow RC flag. The Finish Line will be between a blue or orange flag on the RC boat and an inflatable buoy, racers always leaving the buoy to port.

- 7.2. Race Circle 2 will be started using a 3-minute sequence in accordance with Appendix U to the RRS, with the first warning expected to be at 1300. The warning signal for each succeeding class shall be made after the starting signal of the preceding class; there will be no rolling starts.
- 7.3. Race Circle 2 will use inflatable yellow and orange tetrahedrons for course definition. There are expected to be multiple races.
- 7.4. The courses for Race Circle 2 will be displayed on the Committee Boat course board as follows:

W P S/F	Windward mark left to port then to finish
W L P S/F	Windward mark left to port then leeward mark left to port then to finish
W R L P S/F	Windward, reaching and leeward marks left to port, then to finish

- 7.5. S/F indicates the start and finish lines which will be the same unless the course is shortened. If the course is to be taken twice or three times around, the number two or three will appear as in this example: W L P 2 S/F. The RC may choose either a race with multiple roundings or several races once around. Watch your Start signals as well as the course board

8. Race Circle 3.

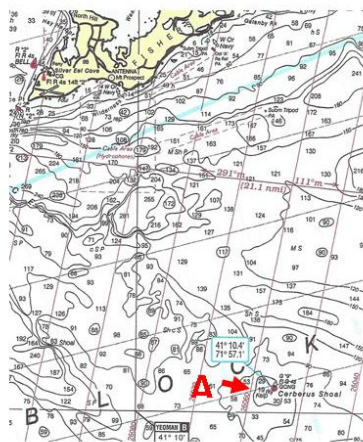
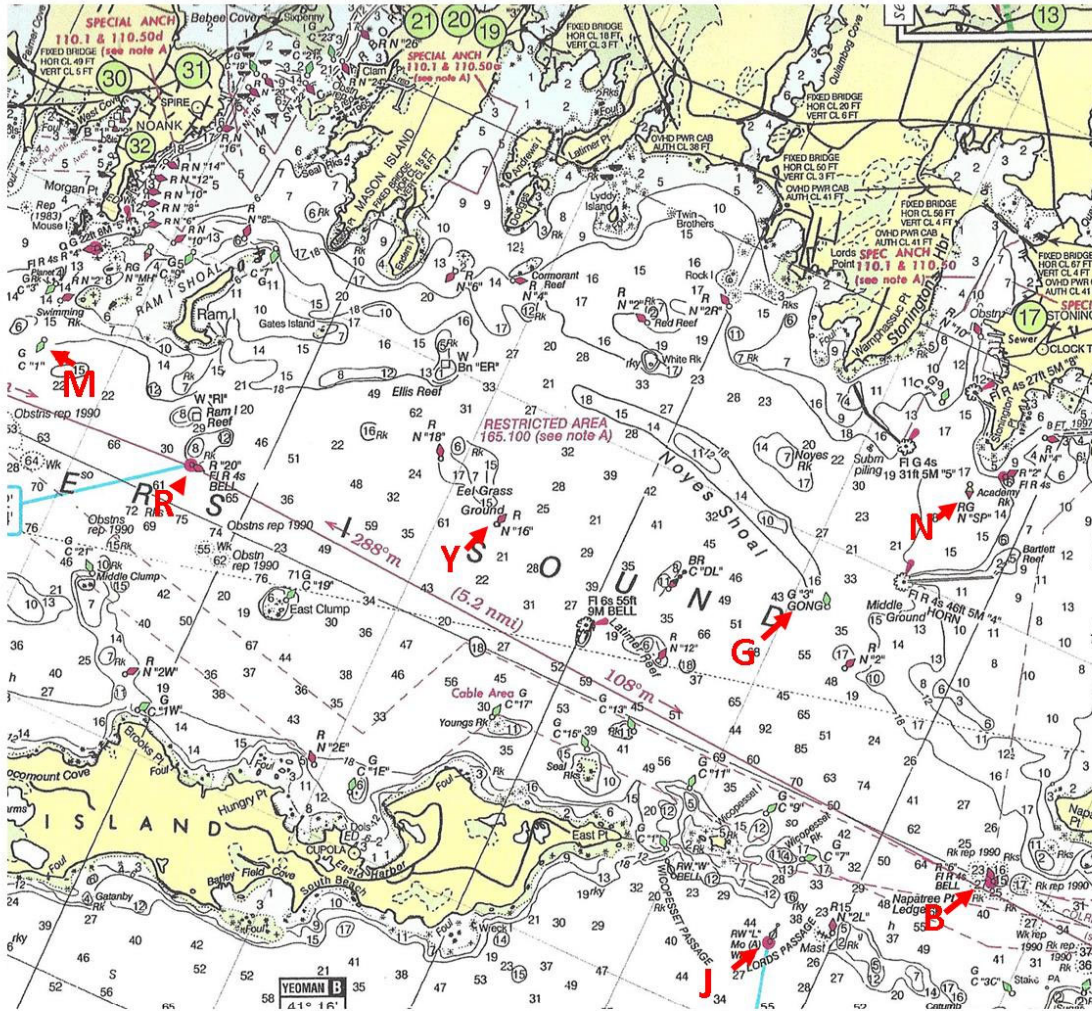
- 8.1. The Start/Finish line for Race Circle 3 will be inside the outer breakwater and will use inflatable yellow and orange tetrahedrons for course definition. It will be between an orange flag on the RC boat and a small orange buoy, racers always leaving the buoy to port. The Finish Line will be between a blue or orange flag on the RC boat and a small orange buoy, racers always leaving the buoy to port. There are expected to be multiple windward-leeward races.
- 8.2. Race Circle 3 will be started using a 3-minute sequence in accordance with Appendix U to the RRS, with the first warning expected to be at 1330. The warning signal for each succeeding class shall be made after the starting signal of the preceding class; there will be no rolling starts.
- 8.3. Race Circle 3 will use inflatable yellow and orange tetrahedrons for course definition. There are expected to be multiple races.

9. Scoring and awards.

- 9.1. PHRF rated boats competing in Race Circle 1 will be scored time on time by class. NEMA rated boats (Class 3) will be scored time on time. One design boats sailing as a class will be scored Low Point, RRS Appendix A.
- 9.2. First, second and third place awards for each class will be given at the Shore Party following the regatta. The Red Lobdell Memorial Trophies will be awarded to the winners of the PHRF Spinnaker, PHRF Cruising Canvas and NEMA classes.
- 9.3. The Shore Party including a pig roast will be held at SHYC following the regatta. See NOR Section 9 for details.

- 10. **Protests.** A boat intending to file a protest will so notify the RC on VHF 79 or by hailing immediately upon conclusion of the affected race and, within one hour of docking of the RC for the affected Race Circle, deliver to the RC a written protest detailing the incident, the boats involved and the RRS rule violated. The RC will schedule a hearing by the Protest Committee as soon as possible after receiving the written protest. Any race in which a protest occurs will not be scored until the protest is decided.

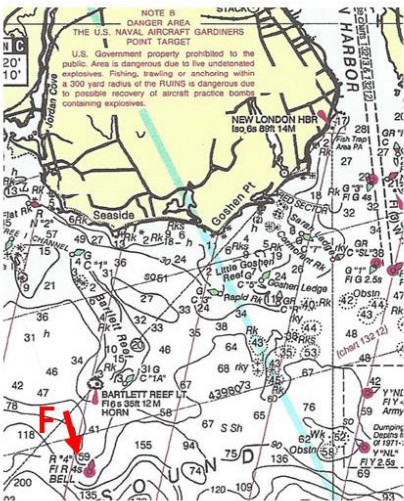
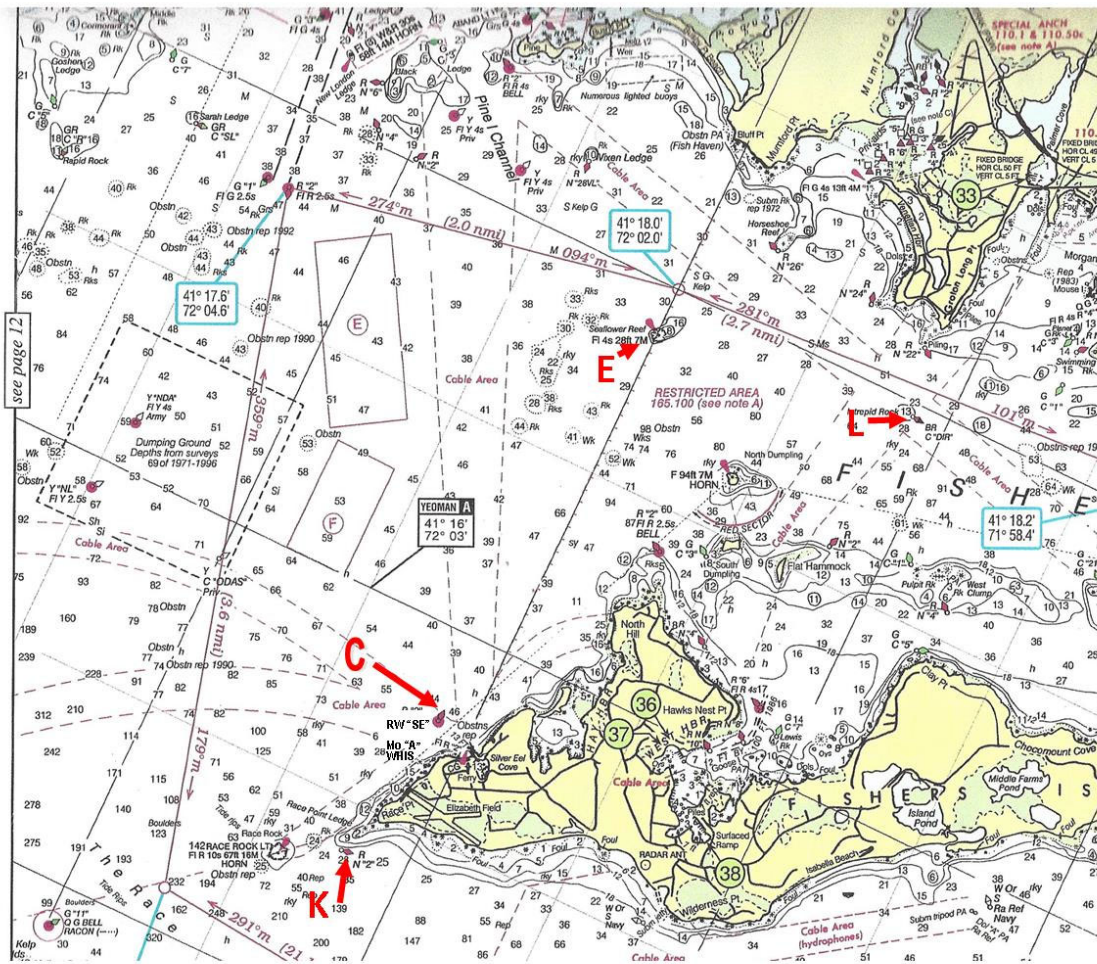
- 11. **Additional Information.** See the SHYC website www.shyc.us/racing/calendar for additional information or contact RC Chair Kevin Bowdler (860-405-5434 or kevinjbowdler@gmail.com).



Assigned
Letter Nav Chart
Designation

Mark Location

- | | | |
|----------|--------------------|---|
| A | G ⁹ " | Flashing Green Gong at Cerberus Shoal |
| N | RG ^{SP} " | Red and Green Nun 0.15 nm south of Stonington Point |
| G | G ³ " | Green Gong 0.35 nm SW of the Horn on Middle Ground
Breakwater, the outer Stonington Breakwater |
| J | RW "L" | Mo(A) whistle Lord's Passage. (Boats must pass
between Can "7" and N "2L" in Lord's Passage.) |
| B | R ⁶ " | Flashing red bell at Napatree Point Ledge |
| Y | N ¹⁶ " | Red Nun at southeast end of Eel Grass Ground |
| R | R ²⁰ " | Red Bell south of Ram Island Reef |
| M | C ¹ " | Green can at mouth of Mystic River |



Assigned Letter Nav Chart Designation Mark Location

- E "FI 4 Sec" Seafflower Reef 1 nm south of Mumford Cove
- L RB "DIR" Red and black can at Intrepid Rock
- F R"4" Red flasher and bell 1 nm south of Bartlett Reef
- C RW "SE" Red & white whistle 0.1 nm west of Silver Eel Cove, Fishers Is.
- K R"2" Red Nun SW Race Pt Fishers Island. "Note: Boats may not pass between red bell # 2 and North Hill on Fishers Island."

Proudly Sponsored by:

